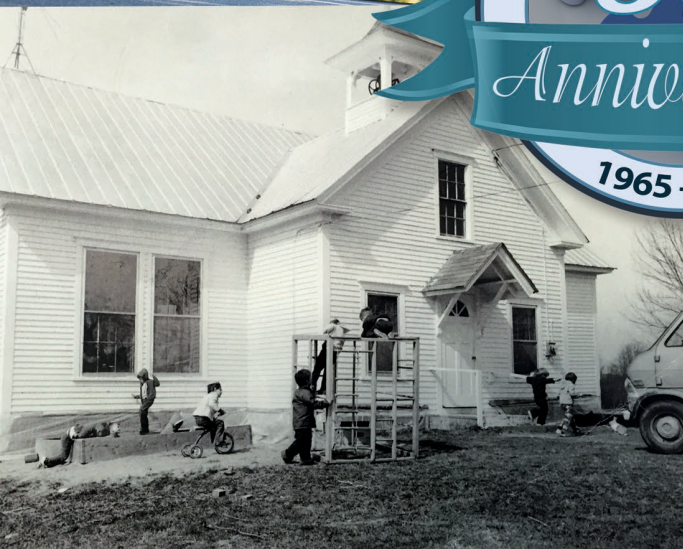




WALDO COMMUNITY ACTION PARTNERS ANNUAL REPORT



2015

STAFF

ADMINISTRATION

Katie Bagley
Gale Hogan
Patricia Hogan
Barbara Hughes
Tabitha Lowe
Marina Macho-Seekins
Penny Peaslee
Dallas Prescott
Keith Small

FUEL ASSISTANCE

Lynelle Alexander
Kitty Doughty
Linda Dudley
Colleen Otis

HEAD START

Margaret Allen
Cheryl Baldwin
Katelyn Bell
Tammi Boyd
Jean Brown
Dawn Bryant
Jennifer Card
Crystal Cullen
Lori Cunningham
Julie Curtis-Peavey
Dante De Palma
Amber Dawn Doiron
Mary Dowling

Jordanne Doyon
Jessie Francis
Gayleen Gogan
Cheryl Gould
Sandi Holk
Bridget Hubbard
Cynthia Hubbard
Lydia James
Tammy McDonald
Claudette Nason
Donna Nielsen
Jackie Overlock
Debra Palmer
April Peebles
Lynette Pendleton
Jennifer Quehl
Margaret Randall
Nadine Richards
Miranda Riley
Margaret Riling
Jesse Rishani
Nettie Simmons
Amber Stanhope
Darlene Sylvester
Nicole Tucker
Lorri Vaillancourt
Emily Young
Jackie Zollman

MID-COAST CONNECTOR

Michelle Bolduc
Melinda Brown
Vicky Brown
Carol Bullock
Adam Clark
Fonda Cogswell
Michael Hallundbaek
Cindy Harnden
Darlene Hart
Bonnie Koller
Anita Michelson
Elise Nason
Sherrie Pierce
Carla Rogerson
Lucy Salisbury
Roberta Tatro
Andrea Thayer

TRANSPORTATION

Edward Adelman
Herman Barr
Pam Bucklin
Steve Bucklin
Pamela Burrows
Catharine Carter
Bruce Chandler
Donald Collins

Dorothy Collins
Robert Demers
Leon Gallant
Gene Gibbs
Jay Gilpatrick
Leroy Harriman
Amanda Hayes
Robert Johnson
Richard Marriner
Jeff Martineau
Michael McDonald
Matt Merando
Earl Moody
Paul Muir
Viola Nickerson
Jamie Parsons
Steffanie Pyle
Michael Rapoza
Chalsey Resmini
Heidi Russo
Brent Stapley

HOUSING

Joanie Heartquist
Brent Stapley
Bjorn Streubel



Pictured above: WCAP Board of Directors' members Joyce Fenner (left) and Vyvienne Ritchie (right)

CONTENTS

Staff.....	1
Board of Directors.....	2
Contact Us.....	2
Executive Director's Note.....	3
Board of Directors' Note.....	4
Commemorating 50 Years.....	5
The Gift That Keeps On Giving.....	7
A Place to Call Home.....	9
Head Start Annual Report.....	11
Head Start School Readiness Report.....	13
2015 At-A-Glance.....	15
Financials.....	17



BOARD

OFFICERS

Faith Campbell, *Chair*
Jessica Woods, *Vice Chair*
Mike Weaver, *Secretary*
Joanne Pease, *Treasurer*

Mertice Moore
Jon Ogletree
Sandra Otis-Anderson
Vyvienne Ritchie
Linda Stec
Ellie Weaver

MEMBERS

Walter Ash Jr.
Joe Brooks
Jon Cheston
Joyce Fenner
Marilyn Fogg
Dan Horton
Arlin Larson
Sarah Martin
Kim Mitchell
Jason Moody
Gary Moore



CONTACT US



PHONE
(207) 338-6809



MAILING ADDRESS
P.O. Box 130
Belfast, ME 04915



LOCATION
9 Field Street
Belfast, ME



WEBSITE
www.waldocap.org



FACEBOOK
[www.facebook.com/waldo communityactionpartners](https://www.facebook.com/waldocommunityactionpartners)

A NOTE FROM THE BOARD OF DIRECTORS

What a year it has been for members of the WCAP Board of Directors. 2015 kicked off with an in-depth review of the agency audit, followed by the decision to authorize renovating heating systems at the Belfast and Searsport Head Start Centers. This resulted in 8 heat pumps being installed, providing more comfort for the young children in our care and saving substantially in fuel costs. The Board also decided to renew Mid-Coast Connector's Region 5 Non-Emergency MaineCare Transportation contract with Maine DHHS. The decision is paying off.

In addition to the careful review of agency financials and program reports in preparation for regularly scheduled Board meetings, WCAP Board members also participate in at least one of four Board Committees. Each committee meets independently of the full board and collectively met over 40 times throughout 2015.

The Development Committee conducted a thorough review of the agency by-laws. The committee's actions included the orchestration and dissemination of WCAP's fundraising appeal. Committee Chair Arlin Larson and member Michael Weaver attended a training hosted by the Maine Association of Non-Profits on planned giving.

The Program Committee started their year by reviewing the agency's Donated Commodities Food Program. They

later worked to develop and implement a client survey of those who received heat pumps and reviewed health and safety practices in Head Start to ensure children were being kept as safe as possible at WCAP Head Start Centers.

The Personnel Committee took the lead on updating WCAP's Safety Plan in response to the alert of a potential hazard nearby. Revisions ensured staff would be both ready and safe should an unlikely safety hazard arise. The committee also successfully hired a new Head Start Director, partered with Starboard Leadership to develop a succession plan for the Executive Director, and worked with a consultant to conduct a wage study.

Three members of the WCAP Board of Directors received perfect attendance awards for being present at every Board of Directors meeting in 2015. Those Board members were Arlin Larson, Joyce Fenner, and Michael Weaver. Additionally, Faith Campbell, Sandra Otis-Anderson, Mike Weaver, and Arlin Larson all received Presidential Service Awards from the White House for volunteering 100 or more hours at WCAP in 2015.

A NOTE FROM THE EXECUTIVE DIRECTOR

In 1965, a group of local residents came together to draft the Articles of Incorporation for an organization that would be the first of its kind in Waldo County. They were led by a man named William Jabine and their hard work resulted in the creation of Waldo County Committee for Social Action (WCCSA), now called Waldo Community Action Partners (WCAP).

This year, WCAP celebrated 50 years of service. Over the course of its history, the list of services provided has both grown and dwindled. WCAP has come a long way and is now the largest provider of social services in Waldo County. It is as big as it's ever been operationally and brings forth more resources in support of the self-sufficiency of low-income people than ever before. We employ a dedicated team of 95 people and bring more than \$10 million in revenue into our region for transportation, early childhood education, energy assistance, energy conservation, food and other programs.

A number of WCAP programs saw an increase in the amount of low-income residents assisted in 2015. New this year was the installation of heat pumps into 25 Waldo County homes. We provided furnace repair/replacement to 131 homes; an increase of 81 homes from 2014. Also seeing increases were our Weatherization and Electric Lifeline programs, and our Cinderella Project of Maine initiative, which was expanded into Kennebec County.

Other expansions in 2015 included two new Head Start classrooms opened in Stockton Springs and two Early Head Start classrooms opened in Searsport.

I am also very pleased to announce that in 2015, WCAP recouped its investment in the startup of its MaineCare Non-Emergency Transportation Brokerage, Mid-Coast Connector, which serves MaineCare members from Winterport to Brunswick. The program responded to 52,326 calls in 2015. They saw an increase in both call volume and the number of trips coordinated between 2014 and 2015.

WCAP is very grateful for the donations received from municipalities, staff, Board members, community members, and businesses. These discretionary funds are able to leverage other State and Federal funds and help make WCAP stronger as an organization with significant local support.

The more we grow, the more we appreciate the hundreds of local volunteers who come together to help us achieve our mission, "to create opportunities for people to improve their quality of life". Whether it be a Board member, Cinderella Project of Maine fairy godmother, Heroes 4 Hunger food box volunteer, volunteer driver, or a Head Start classroom volunteer, all our volunteers make a difference to those we serve and are a critical part of our community impact and success.



COMMEMORATING 50 YEARS

Waldo Community Action Partners (WCAP) is a charitable, educational, private non-profit community action program that has been helping low- to moderate-income individuals and families in Waldo County and its surrounding communities to meet their basic needs for 50 years.

To commemorate those 50 years, WCAP launched a summer of celebration within the community, kicking off with a reunion of Head Start alumni both young and old on July 23. The event opened with a welcome from WCAP Executive Director, Keith Small, and a word from Rep. Erin Herbig. "I got into politics to work on economic development opportunities for young Mainers because I grew up around here and know how challenging things can be at times," she shared. "I've been in office for five years and I know more and more now the best way to improve your own economic situation is always education... I've always supported Head Start and I just really appreciate everything that you all do and I think it's wonderful that you all came out today because it is all about family and about education and that's how we move communities forward." Following her remarks, Rep. Herbig presented Executive Director Keith Small with a heartfelt letter.

Faith Garrold, who was a Head Start Director for WCAP starting in 1998, expressed similar sentiments. Having gone from being a Head Start Director to the Assistant Superintendent of Schools for R.S.U. #3, Garrold saw firsthand the impact Head Start's services in Waldo County. "Head Start has always had a very familiar place in my heart... I saw the results of Head Start children coming into our school system," she said. "Over the 5 years that I was here, I had a lot of personal experiences. As a program, we had a lot of important experiences. Not least of which is we were fortunate enough to go to Washington D.C. and pick up a Quality Program Award from the Federal government." Despite having been given the opportunity to fly to Washington and see the program she had been leading receive such an award, it was a different moment which Garrold remembered as the one she was most proud of. "At Unity Head Start, we admitted the first severely handicapped child," she told onlookers. "This was a child who had to be tube fed. She came with a nurse to help her but the program just accepted her as they did every other... I think that's such an important part of Head Start."

In typical reunion fashion, attendees were invited to revisit the classroom. WCAP's Early Head Start

socialization classroom, which was extended as an addition to its Belfast Head Start Center in 2012 soon filled with Head Start parents, staff, and children both past and present. "It looks so different now," Austin Merando, who attended Belfast Head Start in 2001 reminisced. "I miss the loft."

Later in the programming, a personal video message from Senator Susan Collins was shown, congratulating WCAP's Head Start Program on having served more than 5,000 children since it began. Head Start was the first program of WCAP when it was first incorporated in 1965, back when the agency was known as Waldo County Committee for Social Action.

In August, WCAP held back to back events. In the heat of the summer, WCAP staff and volunteers came together to set up a carnival, which was free for the community thanks to generous local business sponsors. The turnout was great and kids had fun with magicians, meeting Disney princesses, playing in a bounce house, cooling off with snow cones, and playing free games for prizes.

Following the family fun carnival was an evening reception, complete with white lights and fresh flowers overlooking the bubbly fountain of the Belfast Shrine Club. Former Executive Director Joyce Scott was present to talk to attendees about WCAP's history and Rep. Erin Herbig made a second appearance, presenting a proclamation from the Office of Senate President Michael Thibodeau to WCAP. Also honored during the event was a past Board Chair, the late Fleetwood Pride Jr., whose wife Marion accepted his award for him. Past Board Chair Kate Miklovich became the first ever recipient of the WCAP Fleetwood Pride Jr. Community Service Award and the room reminisced the old days with a slideshow and an open mic session to share past memories and anecdotes.

Present in the crowd was the lawyer who helped draft the agency's original Articles of Incorporation. He spoke highly of the late William Jabine, who brought all of his friends together one day in 1965 with the idea of starting up a community action agency in Waldo County after hearing President Lyndon B. Johnson give his speech about the War on Poverty.

WCAP has him and many others to thank for where it is today - including the many sponsors who helped make all of our 50th anniversary events possible and most importantly, all of our volunteers and staff.



TIMELINE

- '65** WCAP was incorporated. Head Start is its first program.
- '72** WCAP puts Operation Sea-ME (Transportation) into operation.
- '73** WCAP has brought more than \$2,000,000 into the county.
- '77** WCAP trains five CETA workers to prepare video tapes documenting the history of the work role of Waldo County women. The footage is shown nationally.
- '83** The Community Services Block Grant (CSBG) is created and WCAP is a recipient.
- '88** Winifred Black resigns and Joyce Scott becomes the new Executive Director.
- '92** WCAP's programs move into the newly renovated Belfast Center and are located in one building for the first time.
- '96** WCAP opened its Searsport Head Start Center.
- '97** WCAP held its first holiday food box project, distributing 163 Thanksgiving food baskets.
- '99** Transportation has cell phones in all vehicles.
- '00** WCAP launches its first ever website.
- '03** Unity Head Start is featured on WABI TV 5's Jerry Lewis Muscular Dystrophy Telethon.
- '04** WCAP and a host of local service agencies form the Neighbor for Neighbor Coalition.
- '05** Hurricane Katrina causes a spike in oil prices that drives nearly 1,000 families to seek fuel assistance from WCAP during the first week of the 05-06 heating season.
- '11** Joyce Scott retires and Keith Small becomes the 3rd Executive Director in the agency's 46 year history.
- '14** WCAP starts its Mid-Coast Connector program, offering non-emergency MaineCare transportation brokerage services to Region 5.
- '15** WCAP celebrates 50 years of service to Waldo County and its surrounding communities.

THE GIFT THAT KEEPS ON GIVING

WCAP Board member Jon Cheston has some advice for people who desire to donate money to programs in Waldo county, yet struggle with a monthly income that doesn't leave a lot left over.

"I'm an outlier," said Jon, a retired federal government worker. "I'm over 80 years old, but I live on an annuity, which is limited, so I don't have a lot of money to give." His solution was to put WCAP in his will. "It allots WCAP a certain amount when I pass on, which is a way for me to donate without sacrificing our monthly expenses," he said. "This is basically the only way I can give and I'm sure others are in the same place."

Arlin Larson is the Chair of the WCAP Development Committee. According to Arlin, the typical planned giving donor has been a longtime supporter of a charity for at least 10 years, giving a certain amount year after year." However, economic fluctuations happen to everyone. As a retired minister, that's something he's uniquely qualified to understand. "No one wants to see anyone sacrifice the basic necessities to live on in order to donate to others," he said. "Oftentimes, people will simply calculate the amount they have been able to give each year and plan to leave an amount in their will that when invested will make up for what they had been giving that was lost." WCAP's Development Committee has been working hard for the last three years to not only secure more planned gifts such as this, but to increase their annual donors. Last year, a total of 75 donors, gave WCAP \$30,549.65.

Jon, who donates to other causes, is invested in WCAP's mission. He's been on the board for a dozen years. Before that, he was a staff member on the President's Task Force on Poverty in Washington D.C. in the Kennedy/Johnson era. "I was there at the birth of community action agencies. The idea was that they would run the poverty programs locally, rather than at the federal level," he said.

At WCAP, the Development Committee has been working on a long range plan. "We need to think about how to lower the poverty rate county wide beyond our own programs we administer," said Jon. "The perception in the community is that we don't need their help--that the federal and state monies take care of all of WCAP's programs. The fact is some of our grassroots projects, like The Cinderella Project of Maine and Heroes 4 Hunger don't fit under the federally funded categories."

"An organization like Waldo CAP doesn't have a lot of flexibility to allocate certain funds to these other smaller projects, unless it's from unrestricted money, so that's the

importance of developing community support that's not already tied to Head Start or Fuel Assistance," said Arlin. In 2015, nearly \$7,000 was raised for WCAP's General Fund--exactly the type of unrestricted gifts that help the grassroots programs grow, as well as future plans to the community's most pressing needs.

In recent years, WCAP has stepped up to take an advocacy role in bringing together community groups and nonprofits of Waldo County who all share the same mission. "We call ourselves Waldo Community Action Partners--not Program--Partners, Jon explained. "And we need to give more meaning to that word."

WCAP is now consulting with other nonprofit groups to develop a strategic plan to reduce poverty, homelessness, incarceration and increase access to health care. "When you put all of these agencies in the county together, they have an incredible impact on reducing poverty," said Jon.

For Jon, who has been working to help people out of poverty all of his life, there's a peace of mind knowing his assistance on a day-to-day basis will continue long after he's gone. "This is my single big opportunity money-wise to support their efforts," he said.

"That's primarily why people make a planned gift," said Arlin, "because they want their support to continue. Sometimes there's more money there after they are gone." Ideally, when someone gives this way, WCAP would like to put the emphasis on the word 'planned'. "More often than not, when someone leaves WCAP something in their will it comes out of the blue," said Arlin. "While those are wonderful surprises when they happen," he continued, "it helps us know who plans to donate and the amount."

For donors who are interested, Arlin says they prefer unrestricted and irrevocable gifts. WCAP accepts gifts of both cash and stocks for funding both current expenses and building an endowment.

Arlin said the first step to planned giving is to contact Keith Small, Executive Director. "As we're still a small organization, we don't have a Development Department or attorneys," he explained. "We're a board of volunteers, but we do have outside consultants, who can help. If you're interested in making a planned gift first speak to your attorney or financial planner if you have one. If you don't, we can refer you to a bank's trust department that specializes in planned gifts."

--Kay Stephens

**"WE CALL
OURSELVES WALDO
COMMUNITY
ACTION PARTNERS
--NOT PROGRAM
--PARTNERS AND WE
NEED TO GIVE MORE
MEANING TO
THAT WORD."**



A PLACE TO CALL HOME

In the summer of 2012, 54-year-old David N. was in a dire position no one should ever have to be in. His mobile home had been destroyed in a fire and he was living by himself, partly in a shed and partly in a tent. Impaired by intellectual developmental disorders, he was unable to care for himself properly.

He was also afflicted with diabetes, medical issues and late-in-life blindness. When Debbie Ogle, a friend of the family, was asked to get involved and act as his legal guardian, David was in a medical rehab facility. He could not read, write or understand money. His parents were gone and he was being taken advantage of financially. As he could no longer work and received no assistance from DHHS, he had nowhere to go but an abandoned trailer.

As if his life's challenges weren't enough, Ogle recounted a grim story of workplace abuse. There were some people who looked out for him and some people who didn't," she said. David held a job for many years, but at one point several years ago, Ogle said he'd been persuaded by a co-worker to ingest a drink mixed with Drano and had to have his stomach pumped twice. "There are other stories I could tell you that would curl your toes," she said.

Ogle, who volunteers as an advocate for people with intellectual developmental disorders, worked hard to get David into a nice mobile home on land his father had left for him. She said in a Sept. 2015 letter to WCAP:

"We worked very hard to get David back in the nice mobile home you just finished working to winterize. We were on our own as DHHS and APS refused to even consider that David was MR/DD and that he didn't need any help; he was fine...It took us two years of fighting and three court hearings to change their minds."

"We did a lot of work to get his home back in shape. He's in a great spot now," Ogle said. "He lives a happy, healthy productive life and his needs are all well cared for," she wrote in a letter. He now has a full time daytime caretaker as well.

Last year, WCAP got in touch with Ogle and asked if they could do a weatherization evaluation on David's home. "I'm so grateful for the way Waldo CAP stepped in without us having to beg and plead for assistance," she said. "They were where they were supposed to be when they were supposed to be," she added. "The work was done in a timely manner and everything explained as you

proceeded with the job."

WCAP's weatherization program uses federal funds to provide improvements to the home such as: insulation, air infiltration, exhaust vents, poly ground cover, and carbon monoxide detectors.

Once WCAP finished the evaluation, "they called me and told me everything they wanted to do and how it would work," she said. "Everyone went above and beyond and took the time to talk with David and listened to what he wanted to talk about. David, like any responsible homeowner, wants to know what was happening and what the results will be and your staff and workers took the time to include him in the process," she said. "They were very sensitive to his situation and very kind. Very human. He was so happy that they cared. Sometimes you don't see that."

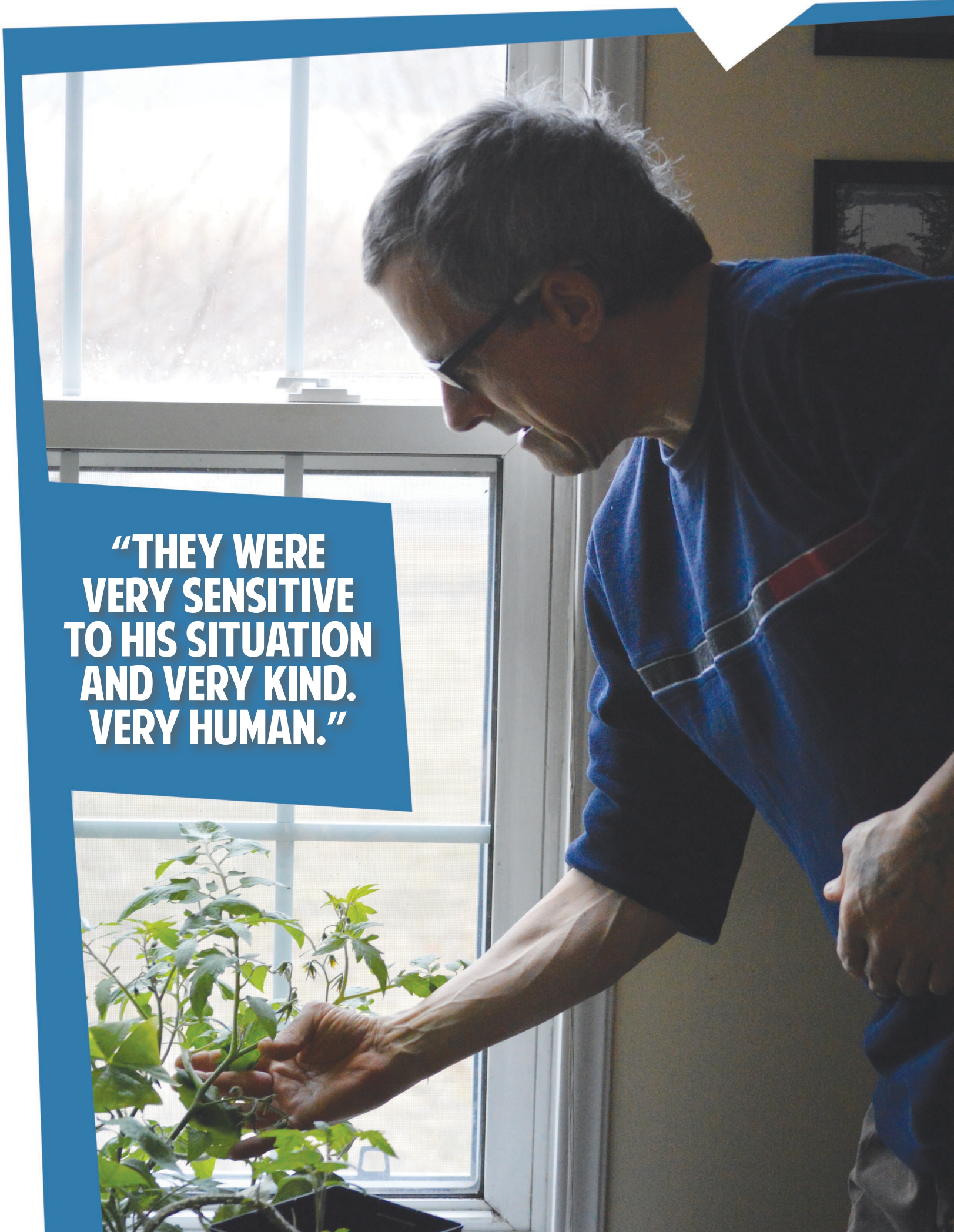
Inside David's home, it's neat as a pin. Large house plants and potted cherry tomato plants from his own gardens decorate the kitchen and living room, set under each window. He was happy to show what WCAP did. "They put insulation in the roof and down underneath the house," he said. "And they put strips around the door frame. It's not so cold as it used to be." For someone who has endured extreme living conditions, this small convenience is a symbol of security.

"I've worked with many different agencies in Maine and other states to help people get needed services," Ogle said. Waldo CAP is the only state program I've ever worked with that actually puts Mainers in need first without the red tape and hoops to jump through. It should be known that you use the Federal and State monies the way U.S. citizens/taxpayers intended. I have not seen that in any other agency in all of the years I've advocated for DD/MR persons."

"So many Mainers with developmental disabilities have no one who can help them fight for services, she said, her voice breaking. "It really feels great when you find people who really want to help. I applaud Waldo Cap for making sure these forgotten people are warm and safe in their homes."

It's the kind of help that lets her stop worrying as much. "He's more secure now than he's been in his entire life."

--Kay Stephens

A man with glasses and a blue shirt is looking out a window. In the foreground, there is a potted plant with green leaves. The man's hand is visible near the plant. The background shows a window with a view of trees outside.

**"THEY WERE
VERY SENSITIVE
TO HIS SITUATION
AND VERY KIND.
VERY HUMAN."**



HEAD START ANNUAL REPORT

Each Head Start agency must make available to the public an annual report that discloses the following information from the most recently concluded fiscal year (September 1, 2014 to August 31, 2015):



TOTAL AMOUNT OF PUBLIC AND PRIVATE FUNDS RECEIVED:

State DHHS Revenue \$193,190.87
State CACFP & Child Nutrition .. \$221,247.11
Federal Head Start \$1,191,511.00
Federal Head Start Training \$20,495.00
In-Kind – Head Start \$405,487.45
Federal Early Head Start \$556,313.62
Federal Early Head Start Training \$14,981.45

Results of the most recent financial audit:

Some agency-wide audit findings were disclosed in accordance with Circular A-1-33, Section 510(a). A copy of audited financials are available upon request.

In 2014-15, WCAP Head Start funds decreased by **\$43,273.**

11.93% of Federal Head Start funds were used to support admin. services.

88.07% were used to support direct services for development programming.

Total number of individuals served:
143 Head Start children
76 Early Head Start children
12 Early Head Start pregnant moms

Average monthly enrollment:
126 Head Start children
55 Early Head Start children

Total number of families served:
133 Head Start families
69 Early Head Start families

% enrolled who were income eligible:
91% of Head Start children
90% of Early Head Start children

2014-2015 WCAP HEAD START POLICY COUNCIL

BELFAST HEAD START:
Erin Nickerson, Voting

BELFAST EARLY HEAD START:
Samantha Ely, Voting

SEARSPORT HEAD START:
Angela Crawford, Voting

SEARSPORT EARLY HEAD START:
Shawn-Nee Johnson, Voting

UNITY PROGRAMS (UHSC & UPRK):
Rebecca Furrow, Voting
Amanda Pease-Lisenby, Voting (Vice Chair)

EHS HOME BASED & PREGNANT MOM PROGRAM OPTION:
Paul Lisenby, Voting

DRINKWATER HEAD START:
Jon Ogletree, Voting (Chair)
Tasheba Davis-Demmons, Alternate

COMMUNITY:
Jessica Woods, Voting
Vyvyenne Ritchie, Voting
Wesley Neff, Voting
Tera Kennedy, Voting
Jill Barnes, Voting



Percentage of enrolled children who received dental exams:

95% of Head Start children
100% of Early Head Start children
50% of Early Head Start pregnant moms

It is through our strong partnerships with our dedicated staff, community groups, and RSUs #3, #20, and #22 that we are able to succeed.

WCAP Head Start has an equally strong partnership with parents. Families are invited to participate in parent groups, Policy Council, the HS/EHS Health Advisory Committees, and the self-assessment process. They are encouraged to participate in their child's education by volunteering in classrooms, their home (for our home based EHS program), in the centers' kitchens, and on field trips.

Last year's total number of volunteer hours was:
11,735 (HS **2,626**; EHS **9,109**)

This was achieved by **187** volunteers in all.



Percentage of enrolled children who received medical exams:

98% of Head Start children
100% of Early Head Start children
100% of Early Head Start pregnant moms





HEAD START SCHOOL READINESS

OVERARCHING GOAL: To fully support children and families to be school ready and to set the stage for future successful learning experiences.

SCHOOL READINESS IS ACHIEVED ACROSS 5 DOMAINS:



HEAD START / EARLY HEAD START CHILD OUTCOMES

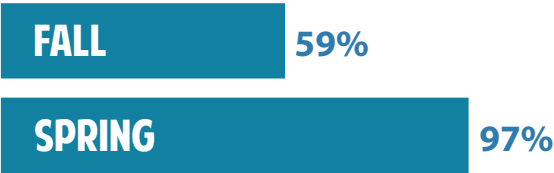
Each year children are assessed using the Teaching Strategies Gold. This system is an observation-based measure of how children are learning different skills across six domains: Social-emotional, physical, language, cognitive, literacy, and mathematics. Our data shows that children come in below the widely held expectations for their age group at the beginning of the school year in the fall and by the spring are making great gains to either meet or exceed the expectations for their age group. The data presented here show those gains for children in our program ages 2+ in our center-based classrooms.

% OF WCAP HEAD START CHILDREN MEETING OR EXCEEDING EXPECTATIONS: (2014 - 2015 PROGRAM YEAR)

SOCIAL-EMOTIONAL



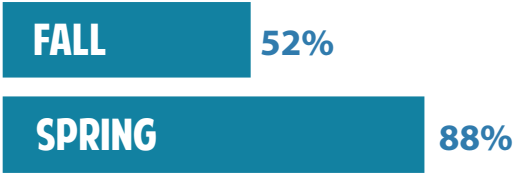
COGNITIVE



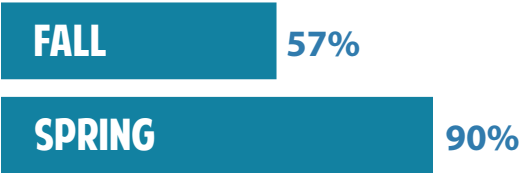
PHYSICAL



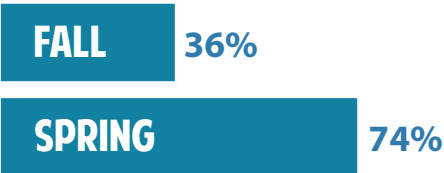
LITERACY



LANGUAGE



MATHEMATICS



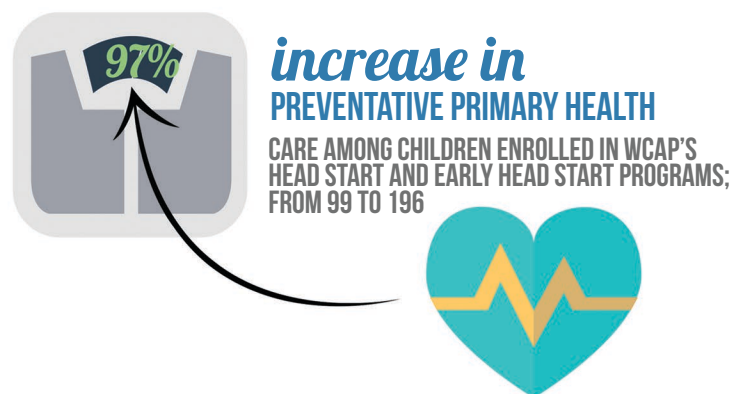
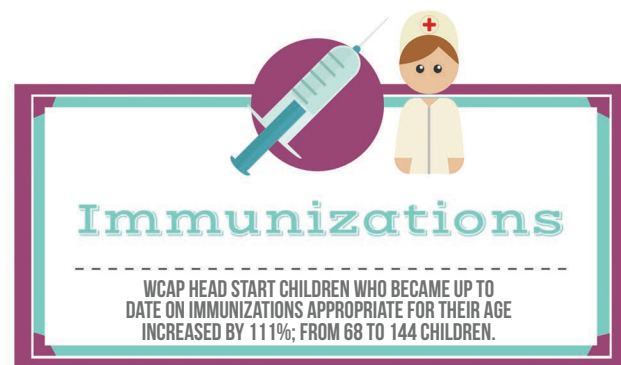
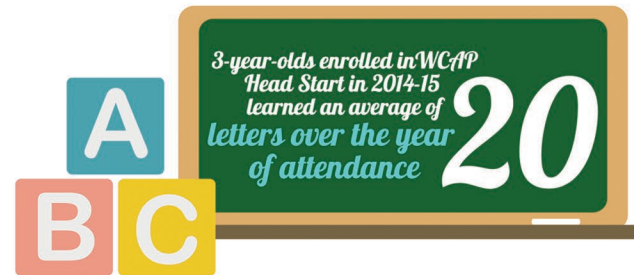
PROPOSED FEDERAL HEAD START & EARLY HEAD START BUDGET FOR PROGRAM EXPENDITURES YEAR 2015-16

Salaries.....	\$912,149
Fringe.....	\$375,897
Equipment.....	\$16,297
Supplies.....	\$57,266
Contractual.....	\$92,646
Other.....	\$126,580
Training and Technical Assistance.....	\$35,406
Indirect Cost.....	\$169,149
Total Expenses.....	\$1,785,390

2015 AT-A-GLANCE

WCAP PROGRAMS IN ACTION

HEAD START



HOUSING

IN 2015, WCAP'S WEATHERIZATION PROGRAM **saved the equivalent of 238** 42-GALLON OIL BARRELS IN ENERGY COSTS FOR LOW-INCOME WALDO COUNTY RESIDENTS. AT A SEASON AVERAGE OF \$1.86 PER GALLON FOR HEATING OIL, THAT'S AN ESTIMATED TOTAL ACCUMULATED ENERGY SAVINGS OF:



\$ 1 8 6,0 0 0

FUEL ASSISTANCE

IN 2015, WCAP FUEL ASSISTANCE **intake workers** HELPED A TOTAL OF:

3,668 INDIVIDUALS

ENOUGH TO FILL THE AVERAGE HIGH SCHOOL FOOTBALL STADIUM



TRANSPORTATION

WCAP BUSES AND VANS **traveled**



THE EQUIVALENT OF



MID-COAST CONNECTOR

THE **average call time** FOR INTAKE WAS



IT WOULD TAKE **one person**

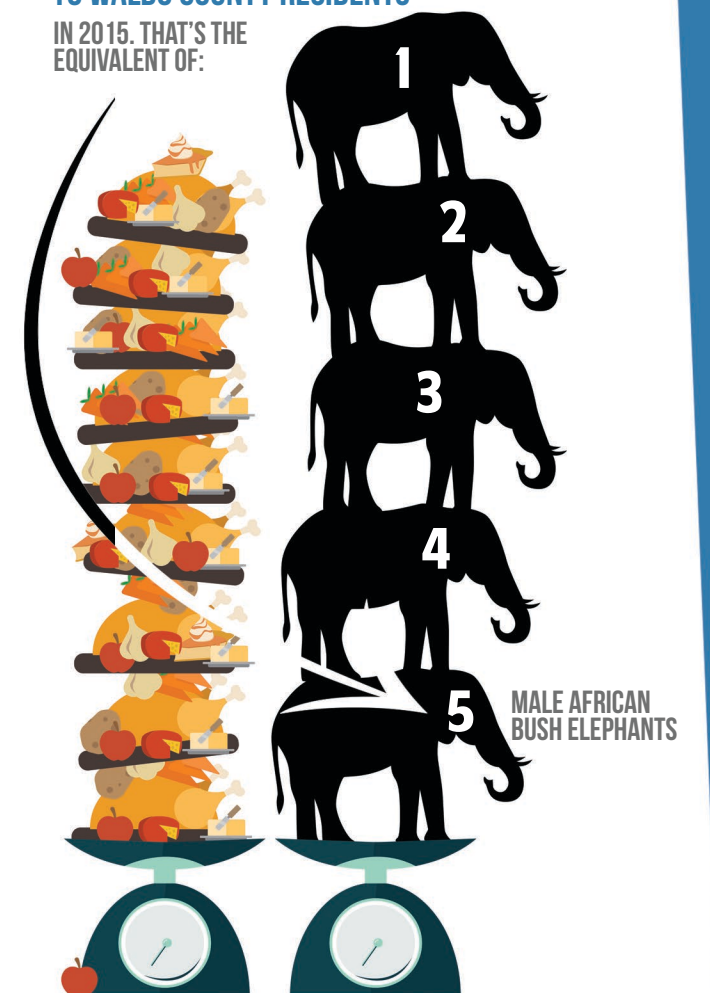


TO MEET THAT DEMAND IF THEY WERE ON THE PHONE FOR 24 HOURS A DAY, 7 DAYS A WEEK.

HEROES 4 HUNGER

provided 36 tons of food TO WALDO COUNTY RESIDENTS

IN 2015, THAT'S THE EQUIVALENT OF:



WCAP 2015 SUMMARY OF SERVICES

REPORT PERIOD (OCT. 1, 2014 - SEPT. 30, 2015)

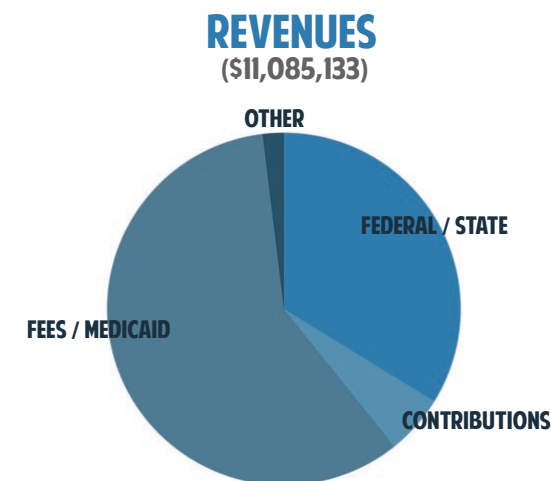
PROGRAM	NUMBER SERVED	\$ VALUE OF SERVICES	SERVICE AREA
TRANSPORTATION	926,191 Waldo Vehicle Miles 1,138 Individuals 1,173,933 Total Miles In & Out of County	\$1,254,069	Waldo County
MAINECARE NON-EMERGENCY TRANSPORTATION BROKERAGE SERVICES OUTSIDE WALDO COUNTY	3,506,124 Vehicle Miles 3,844 Individuals	\$3,856,737	Knox, Lincoln, Sagadahoc Counties + Brunswick and Harpswell Municipalities
HOME ENERGY ASSISTANCE (HEAP)	1,932 Households 3,668 Individuals	\$1,254,933	Waldo County
ENERGY CRISIS INTERVENTION (ECIP)	278 Households 585 Individuals	\$84,717	Waldo County
HEAD START AND CHILD NUTRITION	133 Households 143 Individuals	\$1,616,589	Waldo County
WEATHERIZATION	35 Households 61 Individuals	\$339,452	Waldo County
DONATED COMMODITIES (FOOD)	704 Households (monthly figure)	\$174,605	Waldo County
CENTRAL HEATING IMPROVEMENT (CHIP)	131 Households 264 Individuals	\$202,134	Waldo County
EARLY HEAD START	69 Households 88 Visits	\$848,007	Waldo County
OTHER COUNTY-WIDE SERVICES			
ELECTRIC LIFELINE PROGRAM (ELP)	784 Households		Waldo County
CHILD CARE FOOD PROGRAM	23 Child Care Homes / 104,014 Meals Served		Waldo County
ABOVE GROUND STORAGE TANK PROGRAM	7 Households		Waldo County
SAFETY SEAT PROGRAM	100 Car Seats		Waldo County
HEROES 4 HUNGER HOLIDAY FOOD BOXES	905 Thanksgiving / 1,123 Christmas		Waldo County
NEIGHBOR FOR NEIGHBOR	1,226 Families / 3,208 Individuals		Waldo County
CINDERELLA PROJECT OF MAINE	211 Individuals		Maine

COUNTY WIDE SERVICES TOTAL: \$878,588

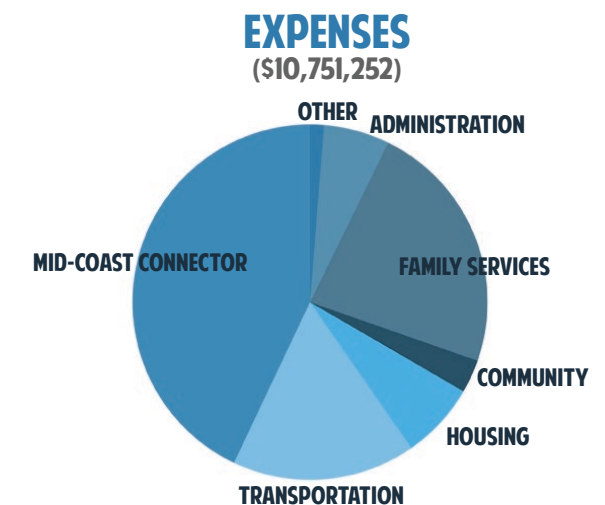
GRAND TOTAL: \$10,509,831

WCAP 2015 FINANCIAL REPORT

REPORT PERIOD (JAN. 1, 2015 - DEC. 31, 2015)
(UN-AUDITED)



UNAUDITED - 2015



AUDITED - 2014

ASSETS	TOTAL	TOTAL
CURRENT ASSETS		
Cash and equivalents	\$512,032.42	\$300,268.00
Accounts and grants receivable	\$887,541.37	\$773,927.00
Loans receivable - deferred	\$119,431.47	\$140,688.00
Loans receivable - repayable	\$21,760.26	
Prepaid expenses	\$39,696.27	\$28,746.00
Total current assets	\$1,580,462.79	\$1,243,629.00
FIXED ASSETS		
Land	\$12,200.00	\$12,200.00
Buildings and improvements	\$210,888.55	\$176,008.00
Furniture and equipment	\$224,855.53	\$184,761.00
Vehicles	\$998,148.00	\$936,925.00
Less: accumulated depreciation	(\$853,677.81)	(\$658,534.00)
Total fixed assets	\$592,413.27	\$651,360.00
TOTAL ASSETS	\$2,172,875.06	\$1,894,989.00

LIABILITIES/NET ASSETS	TOTAL	TOTAL
CURRENT LIABILITES		
Accounts payable	\$225,573.69	\$719,903.00
Accrued payroll & comp. absences	\$505,560.04	\$158,606.00
Short term debt	\$32,392.11	\$32,000.00
Deferred revenue	\$138,771.88	\$94,535.00
Advances	\$192,953.04	
Escrows payable	\$540.00	
Total current liabilities	\$1,095,789.76	\$1,005,044.00
LONG-TERM DEBT	\$15,294.45	\$43,776.00
NET ASSETS	\$1,061,792.85	\$846,169.00
TOTAL LIABILITIES/NET ASSETS	\$2,172,875.06	\$1,894,989.00



WALDO COMMUNITY ACTION PARTNERS
P.O. BOX 130
BELFAST, ME 04915

